

## Diesel Generator - Cummins Series - SE75CO (Open) & SE75CE (Enclosed)

|                |   |
|----------------|---|
| Power Range:   | Standby - 88kW (109.8kVA) Prime - 80kW (100kVA) |
| Rated Voltage: | 208V to 480V                                    |
| Rated Current: | 278A (208V-3P), 121A (480V-3P)                  |
| Rated Power:   | 75kW  |
| Frequency:     | 50Hz or 60Hz                                    |
| Power Factor:  | 0.8 lagging                                     |
| Phase:         | 1-phase or 3-phase                              |
| RPM:           | 1500rpm or 1800rpm                              |



### Standard Equipment

- CE Accredited
- Stamford AVR Brushless Alternator
- Belt Driven Charging Alternator
- Guards For Shielding Rotating Parts
- Vibration Isolators Between Base And Set Assembly
- Deep Sea 5210 Digital Auto-Start Control Panel
- Double Wall Fuel Tank
- Curved Edges & Minimum Outside Fasteners
- Radiator With Pusher Fan
- Fuel & Lubrication Oil Element Filters
- Industrial Muffler
- Main Line Circuit Breaker For Overload Protection
- 24 V Battery with Cables and Rack
- Rubber mounting for Engine and Alternator
- Skid Based Fuel tank with Fuel Gage
- Standard Tool Kit
- Operation & Installation Manuals
- Load Bank Test Report
- 12 months or 2000 running hours Warranty

### Sound Attenuated Model

- Steel, Aluminum or Stainless Steel Enclosure
- Rust Resistant Powder Painted Finish on Enclosure
- Single Lifting Point

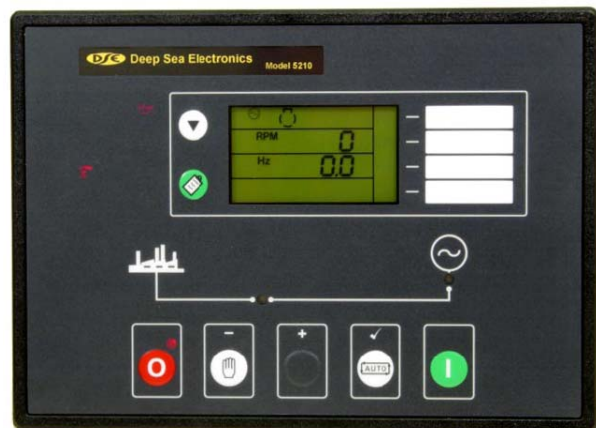
### Available Options

- Road Towing Trailer \*
- Rust-Proof Marine Grade Paint on Engine, Alternator & Enclosure \*
- Steel, Aluminum or Stainless Steel Enclosure \*
- Automatic Transfer Switch (NEMA 3R) \*
- Monicon Digital Auto-Start Control Panel
- Marathon Alternator
- DSE5220 \*; DSE5110 \*; DSE5120 \*; DSE703 \*; DSE4110 \*; DSE501k

\* Additional Cost Applies

### Deep Sea 5210 Specifications:

- Remote modem communication via optional RS232 port
- Easy Pushbutton Control
- Microprocessor Control
- Metering - Fuel Level, RPM, Oil Pressure, Engine Hours Run, etc.
- Event Log
- LED indication



## Deep Sea 5210 Specifications (cont.):

- Analogue Inputs
- Relay Inputs
- Multiple Alarm Channels
- Alternator Under/Over Volts Warning/Shutdown
- Alternator Under/Over Frequency Warning/Shutdown
- Under/Over Speed Warning/Shutdown
- Low Oil Pressure Warning/Shutdown
- High Engine Temperature Warning/Shutdown
- High/Low Battery Volts Warning
- Over-Current Warning/Electrical Trip Shutdown
- Adjustable Crank Cycle/Attempts
- External Remote Start Input (On load/Off load)
- Magnetic Pick-up or Alternator Speed Monitoring
- Event Logging of Shutdown Alarms
- System lock input
- Built in Exercise Scheduler
- SMS Messaging Capability with GSM Modem
- Front panel configuration of timers and alarm trip points

## Engine Specifications:

Model Number: 6BT5.9G1  
 Type: Water-Cooled, in-line, four-stroke, direct injection  
 Rated Output (kW): 86  
 Maximum Output (kW): 93  
 Starting Method: Electric  
 Cooling Method: Closed Water-Cooled  
 Governing Method: Mechanical/Electronic  
 Aspiration: Turbocharged  
 Number of Cylinders: 6  
 Fuel Consumption (g/kw.h) <= 210  
 Bore (mm) x Stroke (mm): 105 X 120  
 Displacement (L): 5.88  
 Lube-Oil Pan Capacity (L): 14.3  
 Voltage for Start (V): 24

## Alternator Specifications:

Type: Stamford  
 Exciter Type: Brushless, Self Excited  
 Leads, Quantity, Type: 12, Reconnectable  
 Voltage Regulator: Solid State, Volts/Hz & Excitation, Overload Protection  
 Insulation: Class H Material, 150°C Temperature Rise  
 Voltage Regulation, No Load to Full Load:  $\pm 1.5\%$  (Self Excited)

## Weight & Dimensions

Open Model (SE75CO)

LWH 235 x 102 x 165 (cm)

LWH 92.6 x 40.2 x 65 (in)

Gross Weight: 1290 kg



Enclosed Model (SE75CE)

LWH 325 x 128 x 200 (cm)

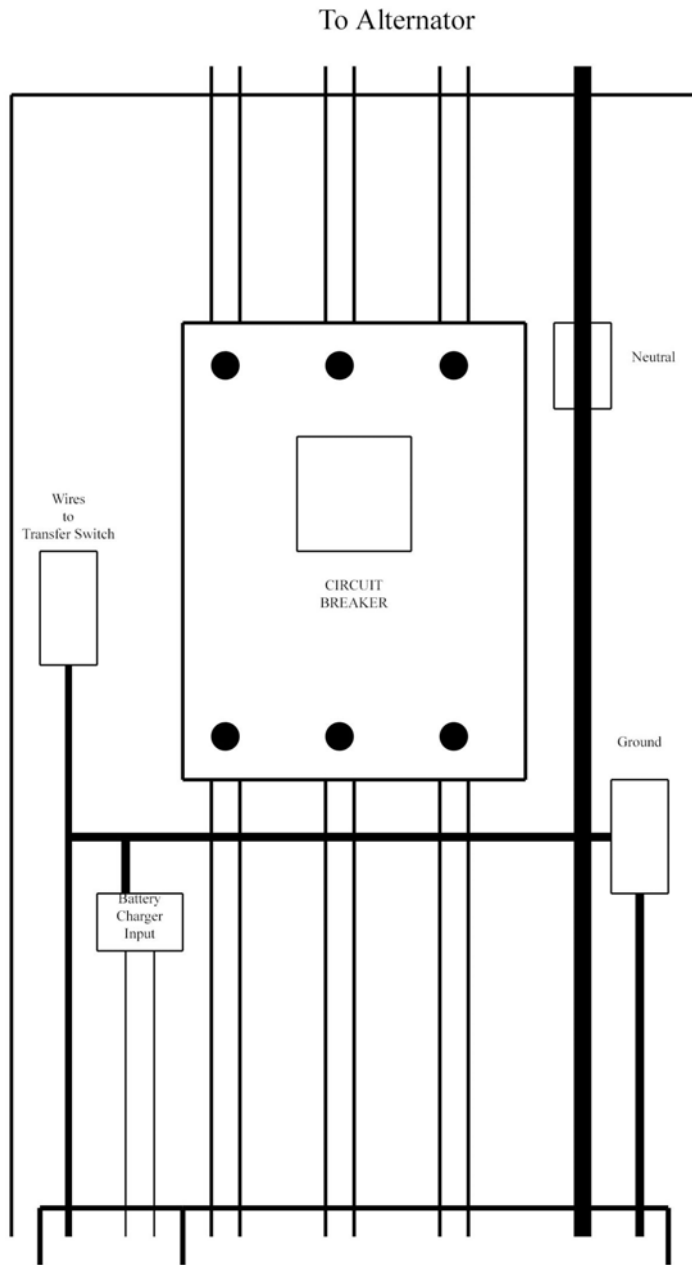
LWH 128 x 50.4 x 78.8 (in)

Gross Weight: 2050 kg

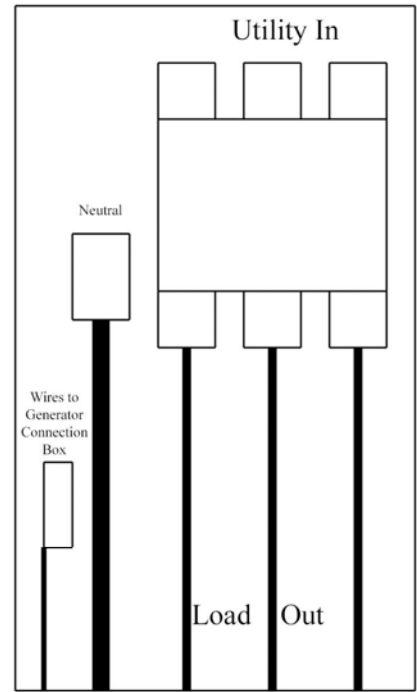


Weight and Dimensions for units will vary if larger fuel tank or different enclosure is required

## Interconnections



TRANSFER SWITCH



To Generator Connection Box

GENERATOR CONNECTION BOX