

## Diesel Generator - Cummins Series - SE300CO (Open) & SE300CE (Enclosed)

Power Range:	Standby - 334kW (418.2kVA) Prime - 304kW (380kVA)
Rated Voltage:	208V to 480V
Rated Current:	1057A (208V-3P), 458A (480V-3P)
Rated Power:	300kW
Frequency:	50Hz or 60Hz
Power Factor:	0.8 lagging
Phase:	1-phase or 3-phase
RPM:	1500rpm or 1800rpm



### Standard Equipment

- CE Accredited
- Stamford AVR Brushless Alternator
- Belt Driven Charging Alternator
- Guards For Shielding Rotating Parts
- Vibration Isolators Between Base And Set Assembly
- Deep Sea 5210 Digital Auto-Start Control Panel
- Double Wall Fuel Tank
- Curved Edges & Minimum Outside Fasteners
- Radiator With Pusher Fan
- Fuel & Lubrication Oil Element Filters
- Industrial Muffler
- Main Line Circuit Breaker For Overload Protection
- 24 V Battery with Cables and Rack
- Rubber mounting for Engine and Alternator
- Skid Based Fuel tank with Fuel Gage
- Standard Tool Kit
- Operation & Installation Manuals
- Load Bank Test Report
- 12 months or 2000 running hours Warranty

### Sound Attenuated Model

- Steel, Aluminum or Stainless Steel Enclosure
- Rust Resistant Powder Painted Finish on Enclosure
- Single Lifting Point

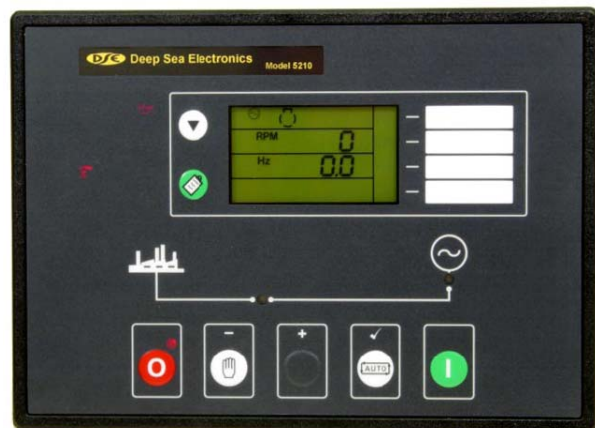
### Available Options

- Road Towing Trailer \*
- Rust-Proof Marine Grade Paint on Engine, Alternator & Enclosure \*
- Steel, Aluminum or Stainless Steel Enclosure \*
- Automatic Transfer Switch (NEMA 3R) \*
- Monicon Digital Auto-Start Control Panel
- Marathon Alternator
- DSE5220 \*; DSE5110 \*; DSE5120 \*; DSE703 \*; DSE4110 \*; DSE501k

\* Additional Cost Applies

### Deep Sea 5210 Specifications:

- Remote modem communication via optional RS232 port
- Easy Pushbutton Control
- Microprocessor Control
- Metering - Fuel Level, RPM, Oil Pressure, Engine Hours Run, etc.
- Event Log
- LED indication



## Deep Sea 5210 Specifications (cont.):

- Analogue Inputs
- Relay Inputs
- Multiple Alarm Channels
- Alternator Under/Over Volts Warning/Shutdown
- Alternator Under/Over Frequency Warning/Shutdown
- Under/Over Speed Warning/Shutdown
- Low Oil Pressure Warning/Shutdown
- High Engine Temperature Warning/Shutdown
- High/Low Battery Volts Warning
- Over-Current Warning/Electrical Trip Shutdown
- Adjustable Crank Cycle/Attempts
- External Remote Start Input (On load/Off load)
- Magnetic Pick-up or Alternator Speed Monitoring
- Event Logging of Shutdown Alarms
- System lock input
- Built in Exercise Scheduler
- SMS Messaging Capability with GSM Modem
- Front panel configuration of timers and alarm trip points

## Engine Specifications:

Model Number: NTAA855-G7  
 Type: Water-Cooled, in-line, four-stroke, direct injection  
 Rated Output (kW): 343  
 Maximum Output (kW): 377  
 Starting Method: Electric  
 Cooling Method: Closed Water-Cooled  
 Governing Method: Electronic  
 Aspiration: Turbocharged  
 Number of Cylinders: 6  
 Fuel Consumption (g/kw.h) <= 206  
 Bore (mm) x Stroke (mm): 105 X 120  
 Displacement (L): 14  
 Lube-Oil Pan Capacity (L): 41  
 Voltage for Start (V): 24

## Alternator Specifications:

Type: Stamford  
 Exciter Type: Brushless, Self Excited  
 Leads, Quantity, Type: 12, Reconnectable  
 Voltage Regulator: Solid State, Volts/Hz & Excitation, Overload Protection  
 Insulation: Class H Material, 150°C Temperature Rise  
 Voltage Regulation, No Load to Full Load:  $\pm 1.5\%$  (Self Excited)

## Weight & Dimensions

Open Model (SE300CO)

LWH 350 x 116 x 217 (cm)

LWH 137.8 x 45.7 x 85.5 (in)

Gross Weight: 3500 kg



Enclosed Model (SE300CE)

LWH 510 x 155 x 233 (cm)

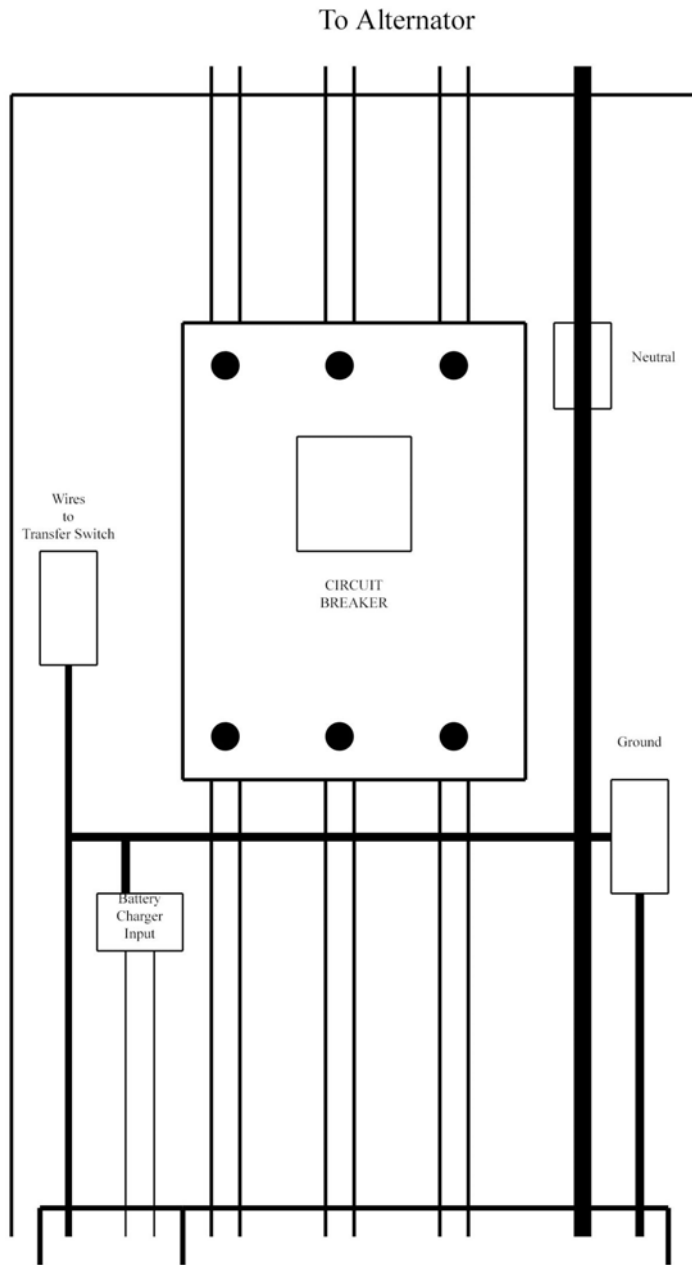
LWH 200.8 x 61.1 x 91.8 (in)

Gross Weight: 5310 kg

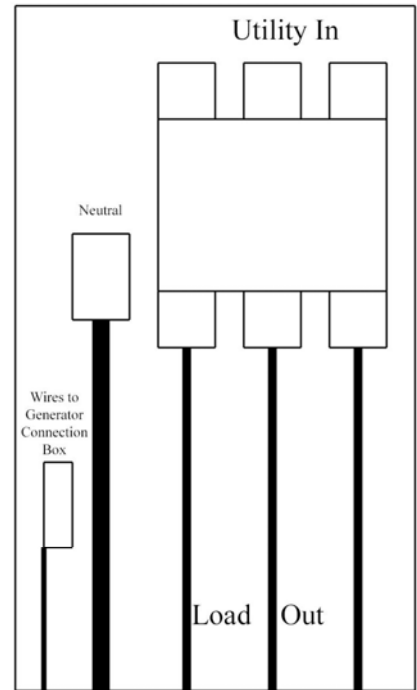


Weight and Dimensions for units will vary if larger fuel tank or different enclosure is required

## Interconnections



TRANSFER SWITCH



To Generator Connection Box

GENERATOR CONNECTION BOX