

Diesel Generator - Cummins Series - SE500CO2 (Open) & SE500CE2 (Enclosed)

Power Range:	Standby - 550kW (687.3kVA) Prime - 500kW (625kVA)
Rated Voltage:	208V to 480V
Rated Current:	1737A (208V-3P), 753A (480V-3P)
Rated Power:	500kW
Frequency:	50Hz or 60Hz
Power Factor:	0.8 lagging
Phase:	1-phase or 3-phase
RPM:	1500rpm or 1800rpm



Standard Equipment

- CE Accredited
- Stamford AVR Brushless Alternator
- Belt Driven Charging Alternator
- Guards For Shielding Rotating Parts
- Vibration Isolators Between Base And Set Assembly
- Deep Sea 5210 Digital Auto-Start Control Panel
- Double Wall Fuel Tank
- Curved Edges & Minimum Outside Fasteners
- Radiator With Pusher Fan
- Fuel & Lubrication Oil Element Filters
- Industrial Muffler
- Main Line Circuit Breaker For Overload Protection
- 24 V Battery with Cables and Rack
- Rubber mounting for Engine and Alternator
- Skid Based Fuel tank with Fuel Gage
- Standard Tool Kit
- Operation & Installation Manuals
- Load Bank Test Report
- 12 months or 2000 running hours Warranty

Sound Attenuated Model

- Steel, Aluminum or Stainless Steel Enclosure
- Rust Resistant Powder Painted Finish on Enclosure
- Single Lifting Point

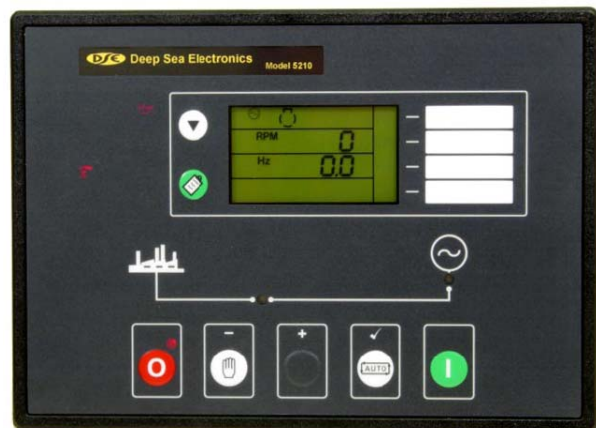
Available Options

- Road Towing Trailer *
- Rust-Proof Marine Grade Paint on Engine, Alternator & Enclosure *
- Steel, Aluminum or Stainless Steel Enclosure *
- Automatic Transfer Switch (NEMA 3R) *
- Monicon Digital Auto-Start Control Panel
- Marathon Alternator
- DSE5220 *; DSE5110 *; DSE5120 *; DSE703 *; DSE4110 *; DSE501k

* Additional Cost Applies

Deep Sea 5210 Specifications:

- Remote modem communication via optional RS232 port
- Easy Pushbutton Control
- Microprocessor Control
- Metering - Fuel Level, RPM, Oil Pressure, Engine Hours Run, etc.
- Event Log
- LED indication



Deep Sea 5210 Specifications (cont.):

- Analogue Inputs
- Relay Inputs
- Multiple Alarm Channels
- Alternator Under/Over Volts Warning/Shutdown
- Alternator Under/Over Frequency Warning/Shutdown
- Under/Over Speed Warning/Shutdown
- Low Oil Pressure Warning/Shutdown
- High Engine Temperature Warning/Shutdown
- High/Low Battery Volts Warning
- Over-Current Warning/Electrical Trip Shutdown
- Adjustable Crank Cycle/Attempts
- External Remote Start Input (On load/Off load)
- Magnetic Pick-up or Alternator Speed Monitoring
- Event Logging of Shutdown Alarms
- System lock input
- Built in Exercise Scheduler
- SMS Messaging Capability with GSM Modem
- Front panel configuration of timers and alarm trip points

Engine Specifications:

Model Number: KTA38-G
 Type: Water-Cooled, V, four-stroke, direct injection
 Rated Output (kW): 560
 Maximum Output (kW): 615
 Starting Method: Electric
 Cooling Method: Closed Water-Cooled
 Governing Method: Electronic
 Aspiration: Turbocharged
 Number of Cylinders: 12V
 Fuel Consumption (g/kw.h) <= 200
 Bore (mm) x Stroke (mm): 105 X 120
 Displacement (L): 38
 Lube-Oil Pan Capacity (L): 135
 Voltage for Start (V): 24

Alternator Specifications:

Type: Stamford
 Exciter Type: Brushless, Self Excited
 Leads, Quantity, Type: 12, Reconnectable
 Voltage Regulator: Solid State, Volts/Hz & Excitation, Overload Protection
 Insulation: Class H Material, 150°C Temperature Rise
 Voltage Regulation, No Load to Full Load: $\pm 1.5\%$ (Self Excited)

Weight & Dimensions

Open Model (SE500CO2)

LWH 390 x 135 x 231 (cm)

LWH 153.6 x 53.2 x 91 (in)

Gross Weight: 4630 kg



Enclosed Model (SE500CE2)

LWH 630 x 195 x 260 (cm)

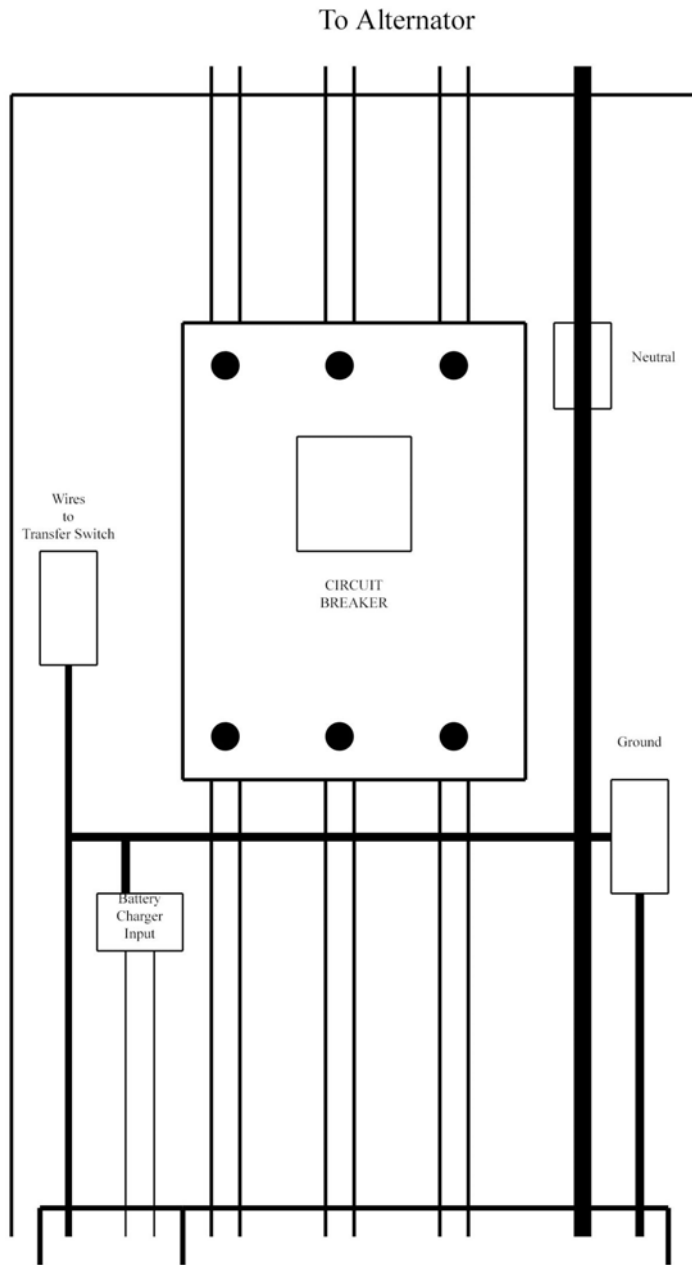
LWH 248.1 x 76.8 x 102.4 (in)

Gross Weight: 6650 kg

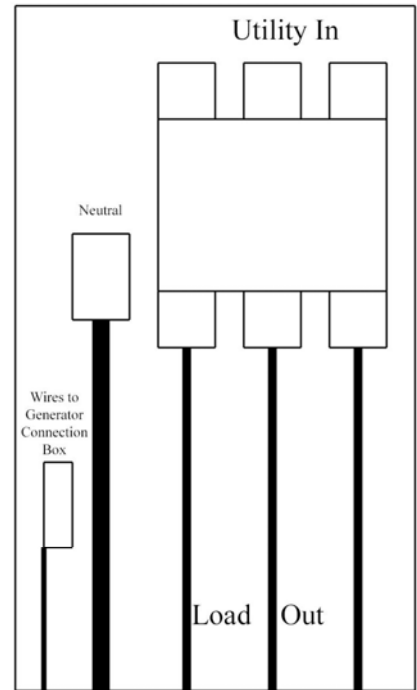


Weight and Dimensions for units will vary if larger fuel tank or different enclosure is required

Interconnections



TRANSFER SWITCH



To Generator Connection Box

GENERATOR CONNECTION BOX